



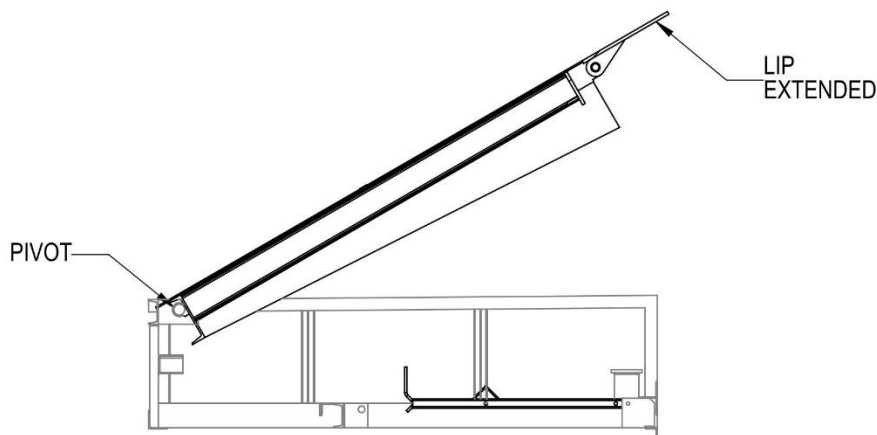
## Procedure for Raising Dock Leveler Top Deck for Maintenance and Repair

This document provides step-by-step instructions on raising the Dock Leveler Top Deck **before** performing Maintenance and Repair.

**WARNING:** This procedure is to be performed by **trained** Maintenance Personnel **only**.

**WARNING:** The Maintenance Personnel **must not** place any parts of the body underneath the Top Deck until completing this Procedure. If there is difficulty performing any of the steps of this Procedure, **stop** and contact Lower Mainland Dock Products Ltd.

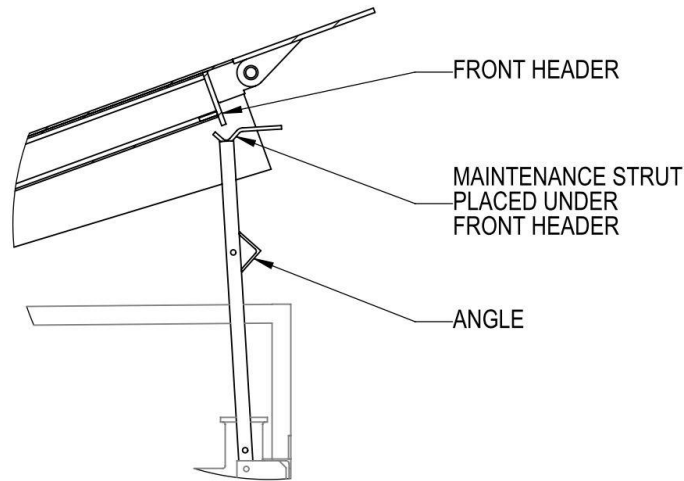
- 1) Extend Lip until it is parallel to the Top Deck.
- 2) Raise Top Deck to the full stroke of the main lift cylinder using the following steps:
  - a. Use the Hydraulic System to raise the Top Deck to the full stroke of the main lift cylinder.
  - b. Activate the Emergency Stop Control. This will prevent the Top Deck from lowering.
  - c. **NOTE:** The Top Deck must be raised by at least 20° in order to provide enough clearance to position the Maintenance Strut.
  - d. If 20° angle cannot be achieved:
    - i. Check that the Side Hold-Down tabs have been removed (Step 1).
    - ii. If Side Hold-Down Tabs have been removed and the issue persists, **stop** and contact Lower Mainland Dock Products Ltd.



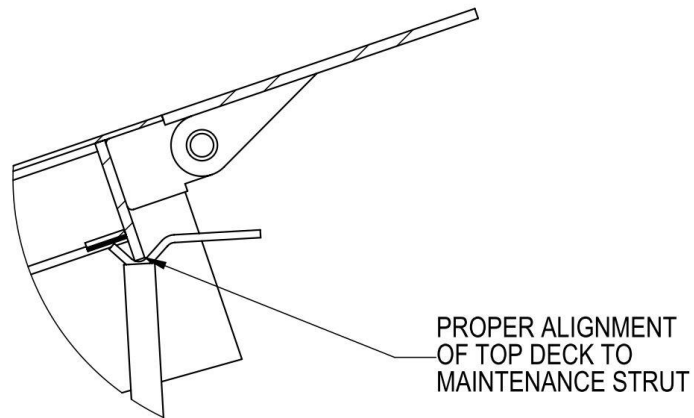
- 3) Use Lifting Handle to raise Maintenance Strut into place using the following steps:



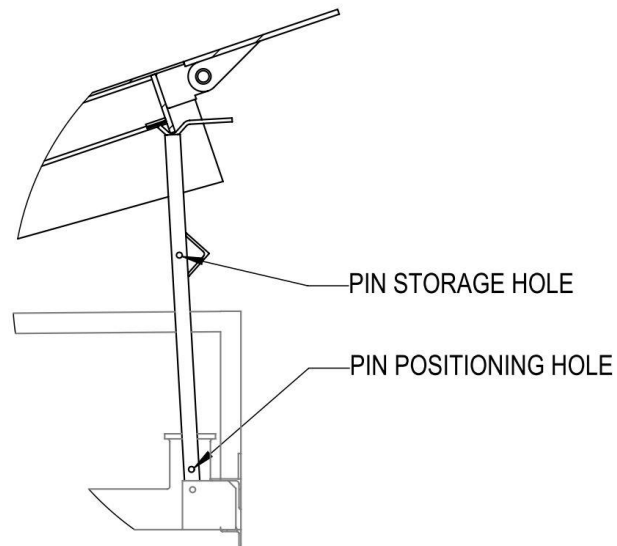
- a. Raise the Maintenance Strut by inserting the Lifting Handle under the Angle.
- b. Place the Maintenance Strut under the Front Header, as shown.



- c. **CAUTION:** The Maintenance Personnel **should not** place arms or any parts of the body underneath the Top Deck while the Top Deck is supported by the Hydraulic System only. The Maintenance Strut is to be relocated using the Lifting Handle only. For any issues performing this procedure, **stop** and contact Lower Mainland Dock Products Ltd.
- 4) Release the Emergency Stop Control and Lower Top Deck onto Maintenance Strut.
- a. Inspect the Maintenance Strut from the sides to ensure the Top Deck has nested properly onto the Maintenance Strut as shown. If the Top Deck is not aligned properly, this means the Top Deck is **not** properly supported. Repeat the procedure from Step 3 until Top Deck is properly nested on the Maintenance Strut. If repeated attempts do not work, **do not** continue any further, and contact Lower Mainland Dock Products Ltd.



- 5) Once Dock Leveler is properly supported by Maintenance Strut, remove Safety Pin from Storage Hole to Positioning Hole, as shown.



- 6) **Lock out** the Electrical and Hydraulic Systems of the Dock Leveler.
- 7) Maintenance Personnel may now proceed with Maintenance and Repair.